
IVIE Enterprises

www.ivie-ent.com

Ph:(918)254-5161 or (888)262-5161 Fax:(918)250-4807



STV-10,

Section II
Parts and Service Manual

(Form. No. 78421B)

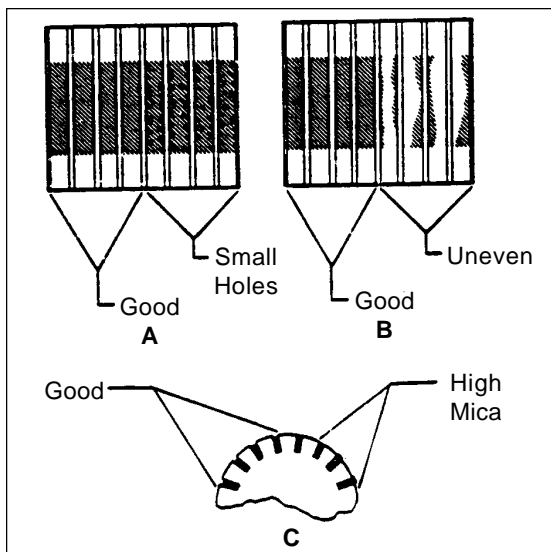


Figure 1

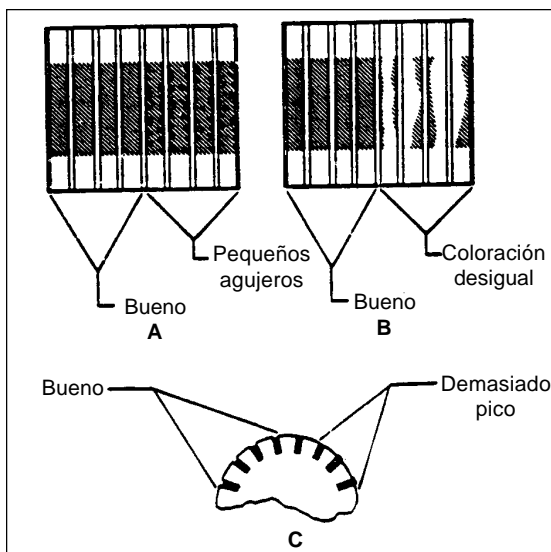


Figure 2

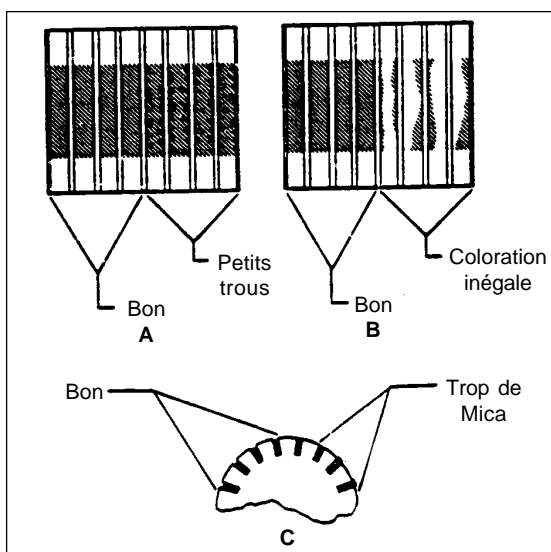


Figure 3

MAINTENANCE

This section describes the procedure that must be done by a person authorized to do maintenance.

WARNING: To prevent electrical shock, always remove the electrical plug from the electrical outlet before doing any repairs or maintenance to this machine.

Keep the machine clean. It will have longer life and need fewer repairs.

Maintenance of the Motor

The motor that has a commutator and carbon brushes must be checked every six months or 600 hours of operation.

WARNING: Electrical inspections must be made by a person authorized to do maintenance. Electrical repairs must be made by a person authorized to make electrical repairs.

How to Check the Commutator and Carbon Brushes

To check the commutator and the carbon brushes, follow this procedure:

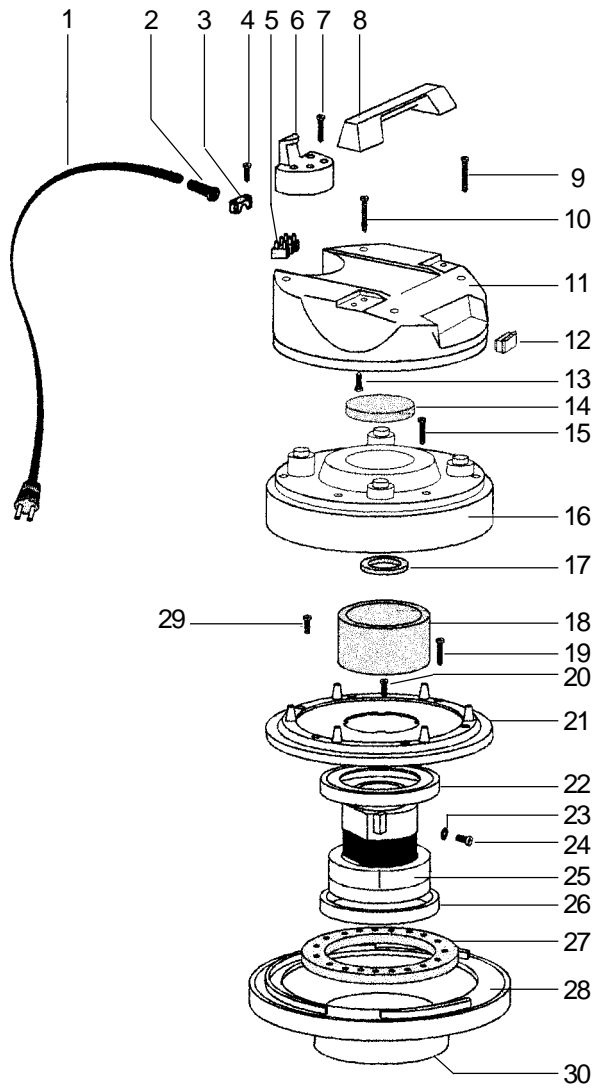
1. Remove the screw that holds the motor cover.
2. Disconnect the wires.
3. Push the motor through the bottom of the plate.
4. Inspect the commutator. Take the machine to a Clarke authorized repair location if you see any of the following conditions:
 - a. Small holes in the surface of the commutator. See figure 1A.
 - b. Uneven color. Look for an even dark brown color. Clean areas indicate a problem. See figure 1B.
 - c. High mica. The mica insulation must be lower than the commutator bars. See figure 1C.
5. Remove the carbon brush assemblies and check the carbon brushes. Replace both carbon brush assemblies if either of the carbon brushes is shorter than ½ inch (13mm), order two new brushes and replace both carbon brushes earlier than the normal inspection time.
6. Install the motor cover, and the fasteners.

WARNING: The machine must be tested for electrical safety after electrical repairs are made.

NOTE: For best operation, have the machine checked by a Clarke authorized repair person every 12 months.

For safe operation and longer life of your product, use Clarke parts.

**CLARKE TECHNOLOGY STV-10
Head Assembly Drawing & Parts List 12/98**



Ref.	Part No.	Description	Qty
1	51841A	Power Cord	1
2	56448A	Strain Relief	1
3	54503A	Grip, Cord	1
4	56441A	Screw 5mm x 20mm	2
5	50522A	Block Terminal	1
6	51842A	Hook, Cord	1
7	56481A	Screw, 5mm x 30mm	4
8	54914A	Handle, Lift	1
9	56482A	Screw, 5mm x 35 mm	2
10	56482A	Screw, 5mm x 35 mm	2
11	51843A	Cover, Dome	1
12	47316B	Switch, Rocker	1
13	56441A	Screw, 5mm x 20mm	4
14	54064A	Filter, Upper	1
15	56482A	Screw, 5mm x 35mm	6
16	51844A	Cover, Motor	1
17	57877A	Ring, Vac Motor	1
18	54063A	Filter, Motor	1
19	56483A	Screw, 5mm x 40 mm	6
20	56441A	Screw, 5mm x 20 mm	4
21	56484A	Support, Motor	1
22	54377A	Gasket, Vac Motor	1
23	59859A	Washer, Star	1
24	56485A	Screw, 4mm x 8mm	1
25	56039B	Motor, Vac 115V	1
	56046B	Motor, Vac 230v	1
	40834A	Brush, Carbon 115V	1
	40835A	Brush, Carbon 230V	1
26	54377A	Gasket, Vac Motor	1
27	57876A	Ring, Lower	1
28	50762A	Base, Motor	1
29	58414A	Screw, 5mm x 30mm	1
30 _u	54340A	Gasket, Head	1
NI	59887A	Wire, Connect	2
NI	52944A	Clip	3

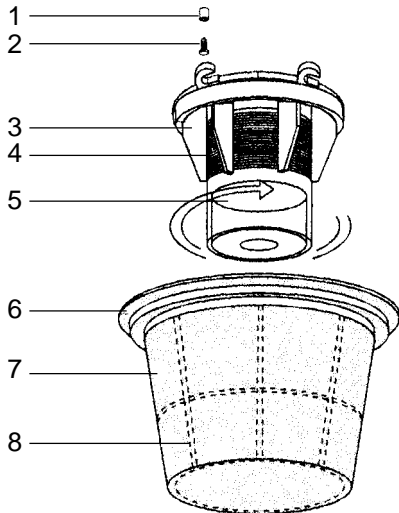
NI = Not illustrated

NOTE: _u indicates a change has been made since last publication of this manual.

Wet Vac Tools

Part No.	Description
59213B	Tool, Squeegee
59214B	Tool, Floor Brush
59215A	Tool, Crevice 38mm
57503A	Reducer, Wand
59860A	Wand, Extension 2 Pc.
59861A	Wand, Chrome 2 Pc
54887A	Hose, 38mm, 2.5m

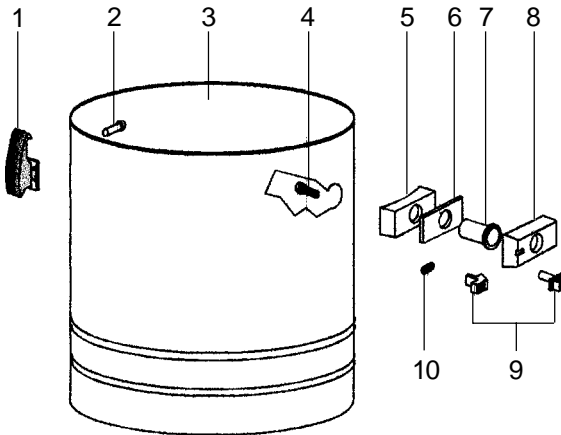
CLARKE TECHNOLOGY STV-10
Filter Bag, Float and Tank Assembly Drawing & Parts List 12/97



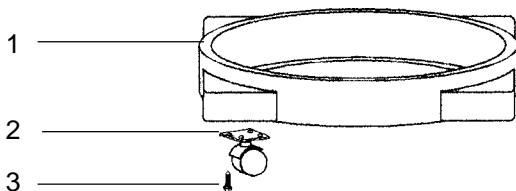
Ref.	Part No.	Description	Qty
1	58541A	Spacer, Plastic	4
2	58411A	Screw, 5mm x 25mm	4
3	51884A	Cage, Float	1
4	58073A	Screen, Filter	1
5	54065A	Float, Short	1
6	57860A	Ring, Adaptor	1
7	50763A	Bag, Filter	1
8	58417A	Support, Filter Bag	1

To add optional HEPA Filter for STV-10 order:
 54016A HEPA Filter 1 57372A Retainer 1

10 Gallon Stainless Assembly Drawing & Parts List 12/97



Ref.	Part No.	Description	Qty
1	51823A	Clamp, Tank	2
2	57380A	Rivet	4
3	58919A	Tank, Stainless 10 gal.	1
4	56481A	Screw, 5mm x 30mm	4
5	57373A	Retainer, S.S. Tank	1
6	54376A	Gasket, Tank Adaptor	1
7	53133A	Deflector, Tank	1
8	50336A	Adaptor, Hose	1
9	50524R	Button, Push	1
10	58692A	Spring, Push button	1

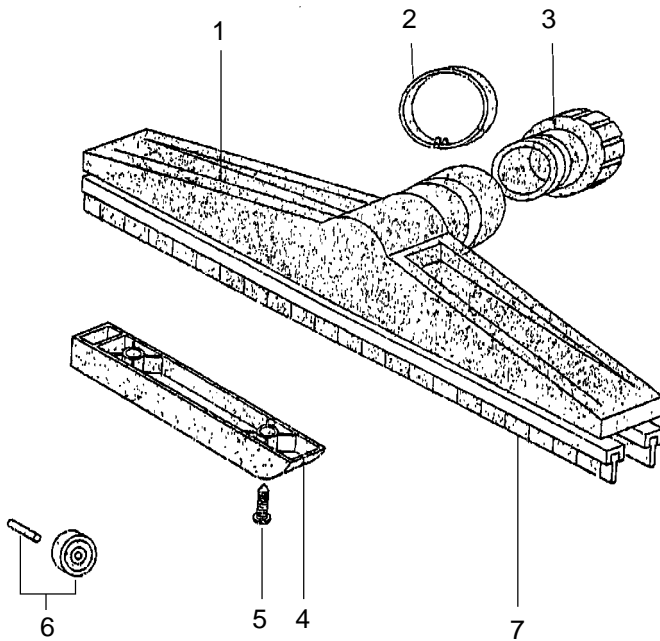


Ref.	Part No.	Description	Qty
1	50525A	Base, Caster	1
2	52129A	Caster, Swivel	4
3	56489A	Screw, 4mm x 15mm	16

IVIE Enterprises

www.ivie-ent.com Ph:(918)254-5161 or (888)262-5161 Fax:(918)250-4807

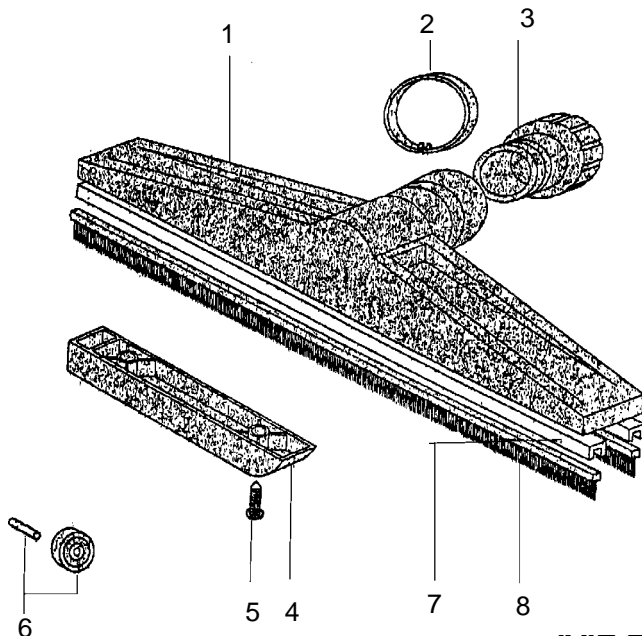
**CLARKE TECHNOLOGY PTV-10 & STV-10
Squeegee Tool Drawing & Parts List 12/97**



Squeegee Tool - 59213B

Ref.	Part No.	Qty	Description
1	50753A	1	Body, Tool
2	57873A	1	Ring, Floor Tool
3	50357A	1	Adapter, Floor Tool
4	53096A	2	Support, Floor Tool
5	88001A	4	Screw, 5mm x 15mm
6	59970A	2	Wheel & Axle
7	53097A	2	Squeegee Blade

**CLARKE TECHNOLOGY PTV-10 & STV-10
Floor Brush Tool Drawing & Parts List 12/97**



Floor Brush Tool - 59214B

Ref.	Part No.	Qty	Description
1	50753A	1	Body, Tool
2	57873A	1	Ring, Floor Tool
3	50357A	1	Adaptor, Floor Tool
4	53096A	2	Support, Floor Tool
5	88001A	4	Screw, 5mm x 15mm
6	59970A	2	Wheel & Axle
7	51716A	1	Brush Guide
8	51717A	1	Brush Strip, Serrated

IVIE Enterprises

www.ivie-ent.com

Ph:(918)254-5161 or (888)262-5161 Fax:(918)250-4807